


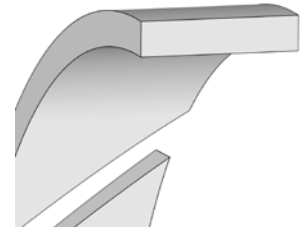


GUIDE RINGS (ROD)

Guide ring FRI

Slotted non-metallic guide ring made of polyamide, for various applications including standardized installation spaces as per ISO 10766.




MATERIAL	PA 4112
 MAX.	-40 to +100 °C
 MAX.	1 m/s
	Earth-moving equipment, forklift trucks, agricultural machines, truck cranes

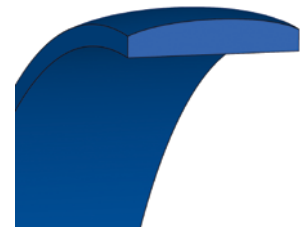


FRI

Guide ring Guivex SBK

Patented non-metallic guide ring made of fabric-base laminate. Optimum stress distribution thanks to profiled static side.




MATERIAL	HG517	HG650
 MAX.	-40 to +100 °C	-40 to +120 °C
 MAX.	1 m/s	1 m/s
	Earth-moving equipment, forklift trucks, tail lifts, agricultural machines, truck cranes, presses, injection molding machines, hydraulic steelwork, support cylinders	



SBK

Guide ring SB

Non-metallic guide ring made of fabric-base laminate.

MATERIAL	HG517	HG600	HG650
 MAX.	-40 to +100 °C	-70 to +100 °C	-40 to +120 °C
 MAX.	1 m/s	1 m/s	1 m/s
	Earth-moving equipment, forklift trucks, tail lifts, agricultural machines, truck cranes, presses, injection molding machines, hydraulic steelwork, support cylinders		



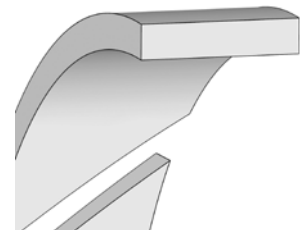
SB

GUIDE RINGS (PISTON)

Guide ring FRA

Slotted non-metallic guide ring made of polyamide, for various applications including standardized installation spaces as per ISO 10766.

MATERIAL	PA 4112
MAX.	-40 to +110 °C
MAX.	1 m/s
	Earth-moving equipment, forklift trucks, agricultural machines, truck cranes



FRA

Guide ring Guivex KBK

Patented non-metallic guide ring made of fabric-base laminate. Optimum stress distribution thanks to profiled static side.

MATERIAL	HG517	HG650
MAX.	-40 to +100 °C	-40 to +120 °C
MAX.	1 m/s	1 m/s
	Earth-moving equipment, forklift trucks, tail lifts, agricultural machines, truck cranes, presses, injection molding machines, hydraulic steelwork, support cylinders	



KBK

Guide ring KB

Slotted non-metallic guide ring made of fabric-base laminate.

MATERIAL	HG517	HG600	HG650
MAX.	-40 to +100 °C	-70 to +100 °C	-40 to +120 °C
MAX.	1 m/s	1 m/s	1 m/s
	Earth-moving equipment, forklift trucks, tail lifts, agricultural machines, truck cranes, presses, injection molding machines, hydraulic steelwork, support cylinders		



KB